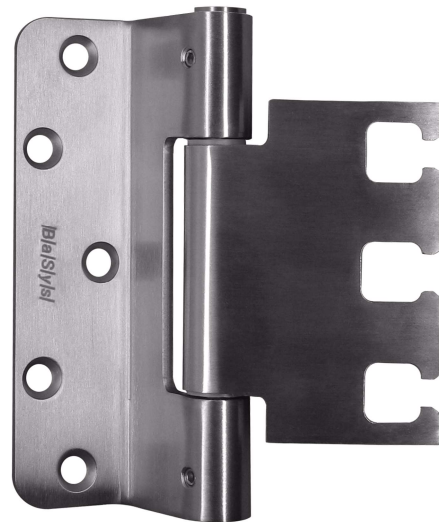
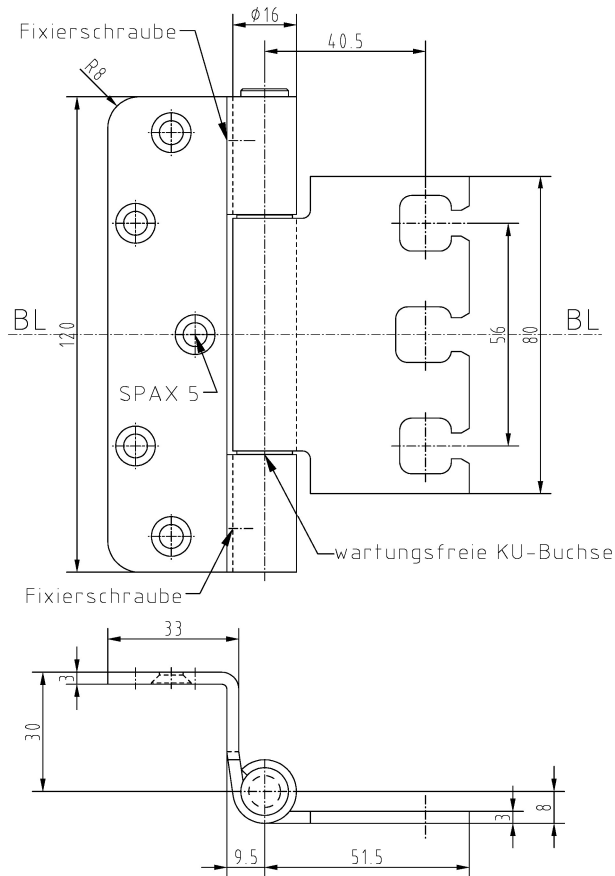


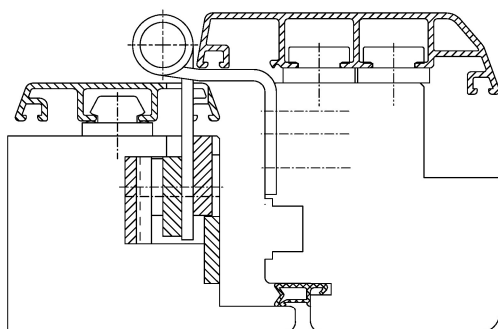
Hinge 1639/120/56



Additional Information

Standard load: Maximum door weight 80 kg (per pair)
 Application: Wood-aluminium profile doors, maintenance-free, with security pin, detachable when mounted
 Accessories: Special receiver STV123/56 3-D; connection dimension 56 mm (VX)

Section Drawing



Item	Finish	PU
039603	enox brushed	20