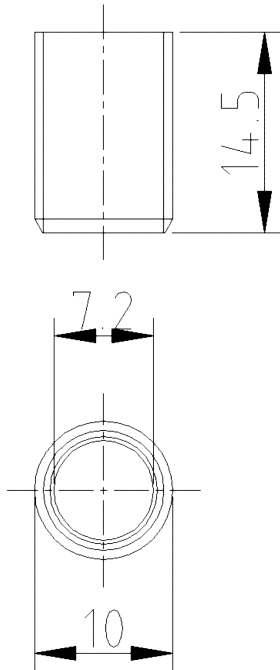


Distance Sleeve D=10x14,5

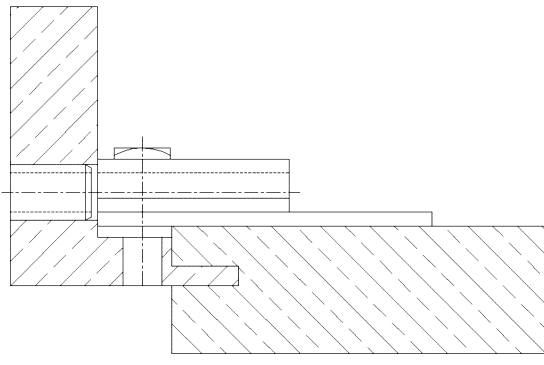


Additional Information

Application: When using receivers without guide sleeve for the hinge's frame part; the distance sleeves provide increased stability of the hinge system in the frame; for a frame thickness of 14.5 mm

Combination: Receivers ST10, ST32, ST73

Section Drawing



Item	Finish	PU
044831	zinc plated	2000