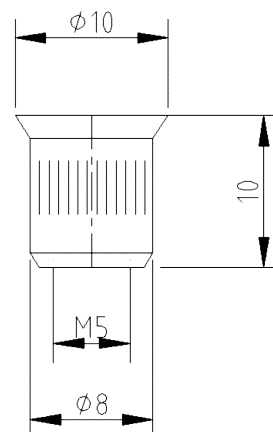


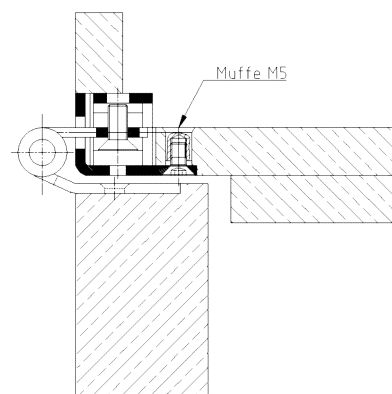
Socket M5x10



Additional Information

Application: Fixation of building hardware in wooden frames; socket is inserted from the rear drilled into the frame, suitable for fastening of receivers and striking plates in MDF or HDF frames

Section Drawing



Item	Finish	PU Remark
022728	without finish	2000 Muffe M5x10 (für STV81 3-D)