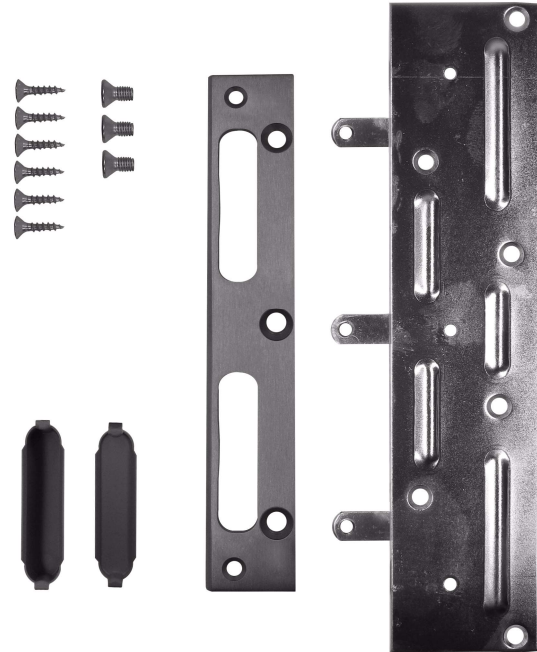
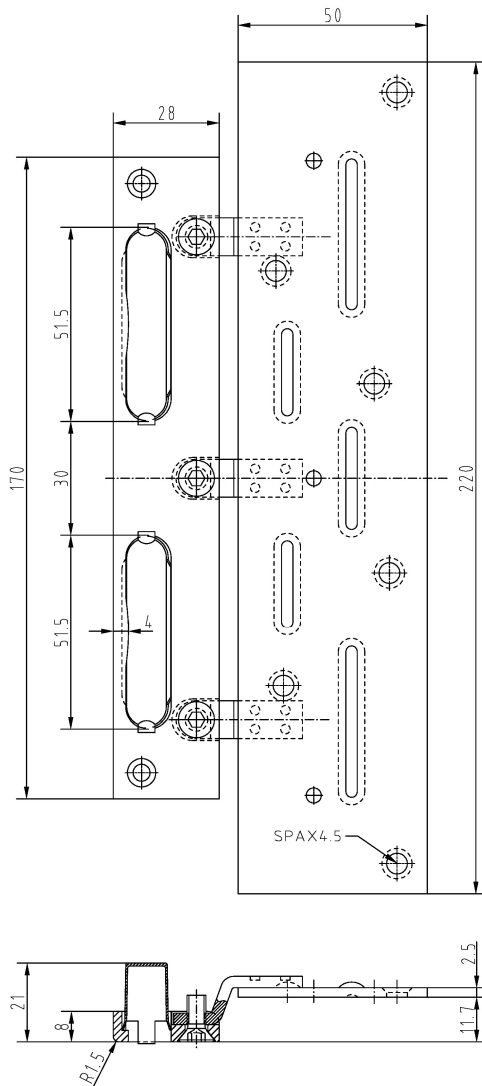


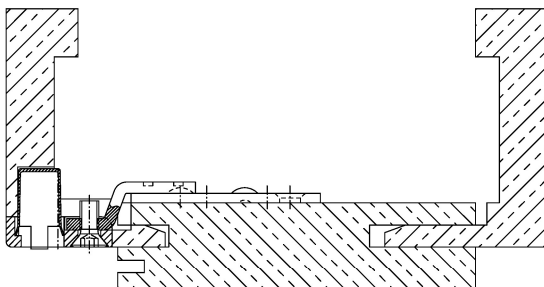
**Retrofit Set 1 Locking Plate 28x170**



**Additional Information**

Standard load: Maximum door weight 150 kg  
Application: Retrofit set for rebated doors/face frames, has to be recessed, made of solid steel, suitable for all DIN locks, applicable to cut-outs for 170mm 2-hole striking plates of System5; including safety plate, plastic lining and screws

**Section Drawing**



Item	Finish	PU
037944	silver color	1