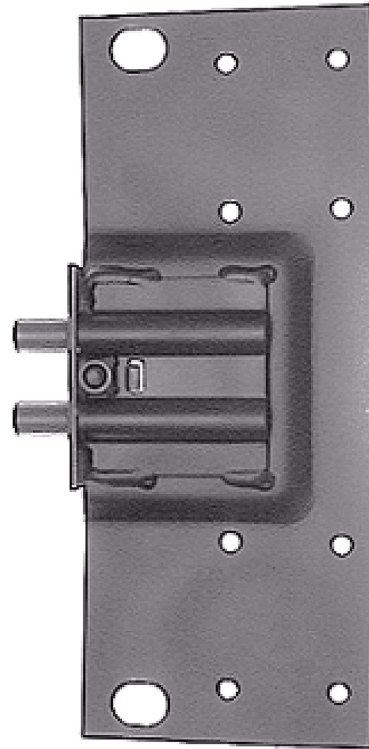
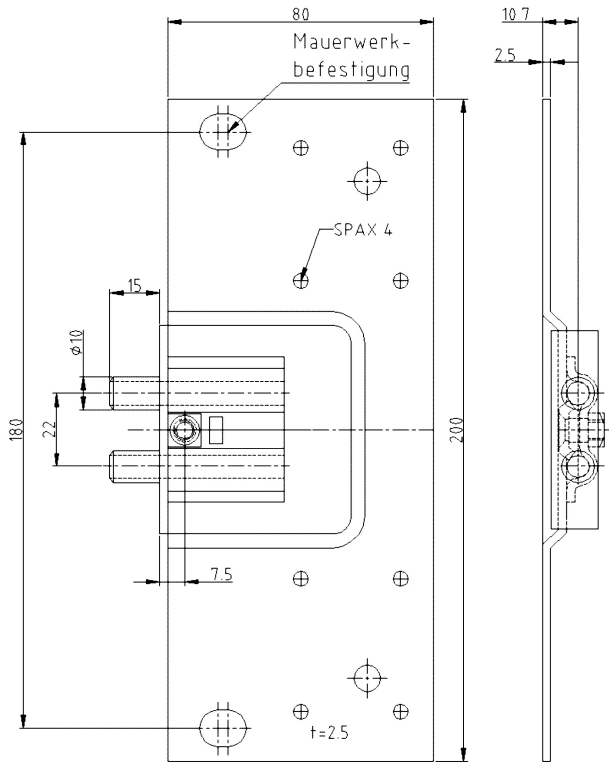


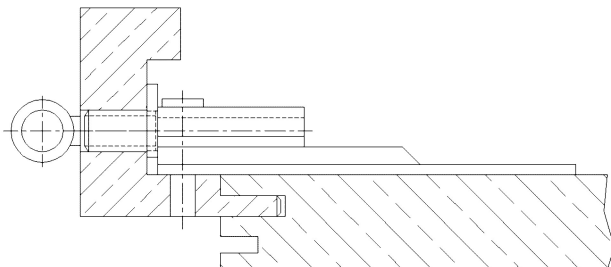
Steel Receiver ST53



Additional Information

Standard load: Maximum door weight 80 kg (per pair)
Application: Wood frames, closed frames, stabilizing front plate, guide sleeves
Combination: COMBICA® frame parts 1534, 1544, 2641, 2941

Section Drawing



Item	Finish	PU Bemerkung
022305	zinc plated	30 Stahltasche ST53/10,7