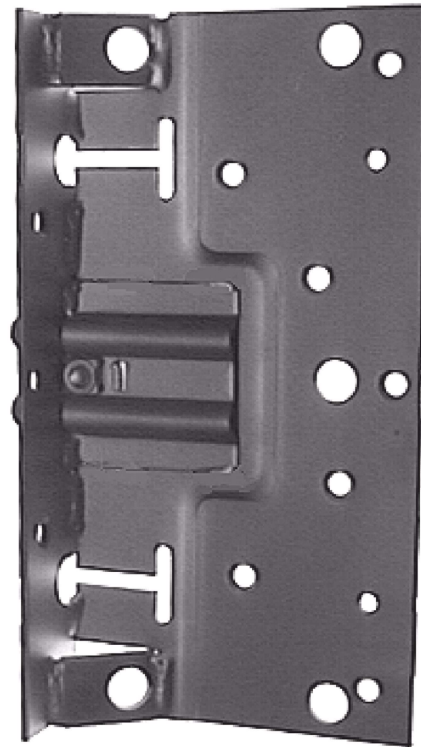
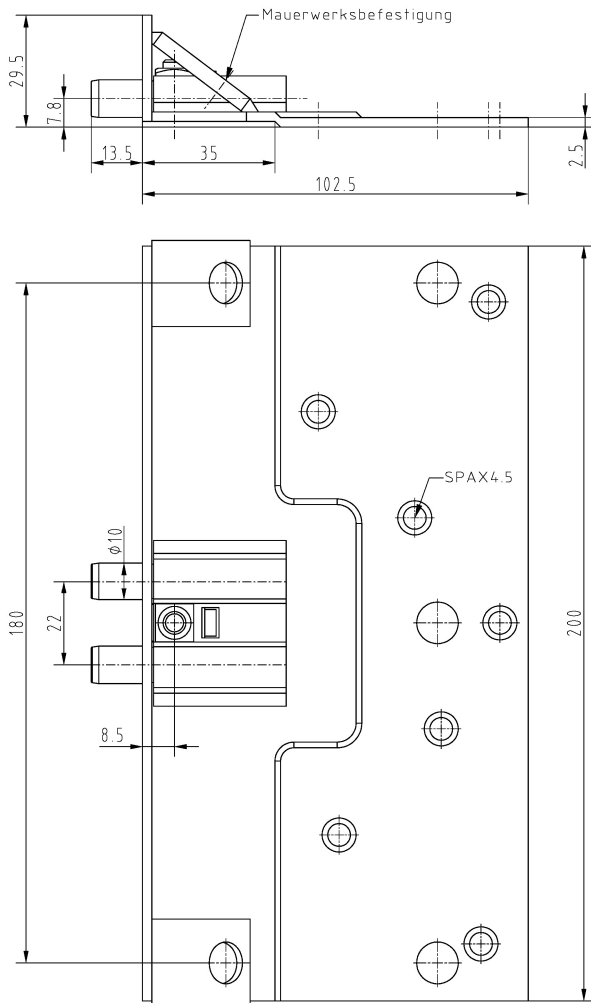


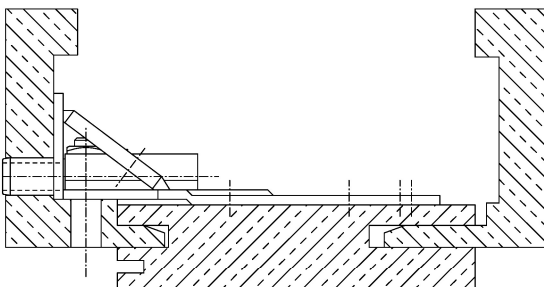
Steel Receiver ST43



Additional Information

Standard load: Maximum door weight 90 kg (per pair)
Application: Wood frames, closed frames, stable attachment to the wall
Combination: COMBICA® frame parts 1534, 1544, 2641, 2941

Section Drawing



Item	Finish	PU Bemerkung
044889	Zn blau	12 Stahltasche ST43/7,8