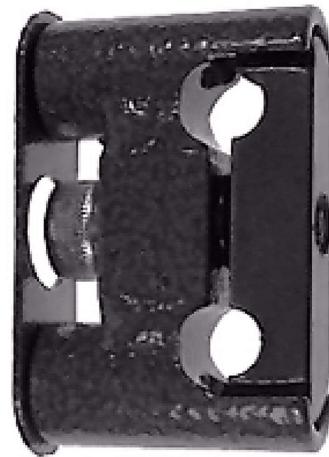
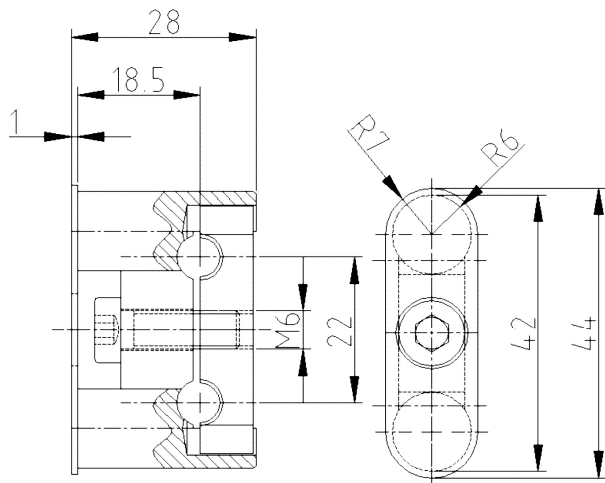


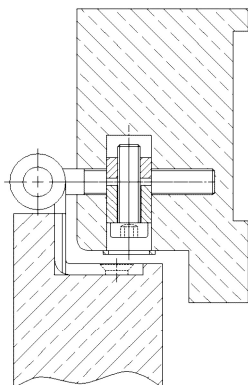
Block Receiver ST73



Additional Information

Standard load: Maximum door weight 80 kg (per pair)
 Application: Wood frames, face frames, made of solid steel, suitable for fire doors
 Combination: COMBICA® frame parts 1534, 1544, 2641, 2941

Section Drawing



Item	Finish	PU Bemerkung
022542	silver color	25 Blocktasche ST73/18,5
022543	white coated	25 Blocktasche ST73/18,5
039001	zinc plated	50 Blocktasche ST73/18,5