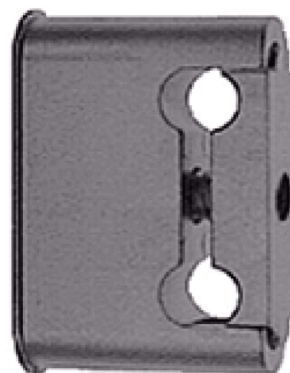
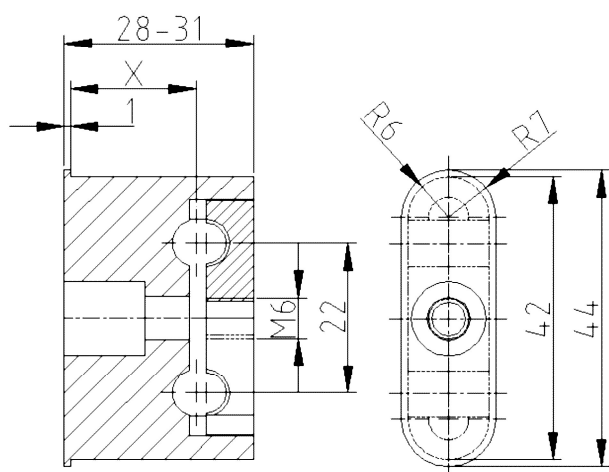


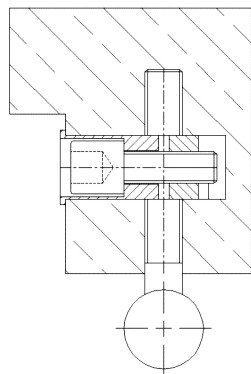
Block Receiver ST32



Additional Information

Standard load: Maximum door weight 70 kg (per pair)
 Application: Wood frames, face frames
 Combination: COMBICA® frame parts 1534, 1544, 2641, 2941
 Note: Available in 18.5 mm, 20.5 mm and 21.5 mm ("X") mounting depth

Section Drawing



Item	Finish	PU Bemerkung
037649	zinc plated	25 Blocktasche ST32/18,5
044826	Zn gelb	25 Blocktasche ST32/18,5
044827	weiß besch.	25 Blocktasche ST32/18,5
037497	Zn gelb	50 Blocktasche ST32/20,5
037650	zinc plated	25 Blocktasche ST32/20,5
044829	weiß besch.	200 Blocktasche ST32/20,5
037608	Zn gelb	200 Blocktasche ST32/21,5
037647	zinc plated	50 Blocktasche ST32/21,5