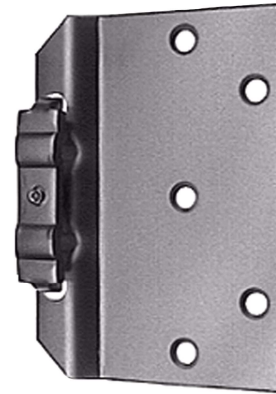
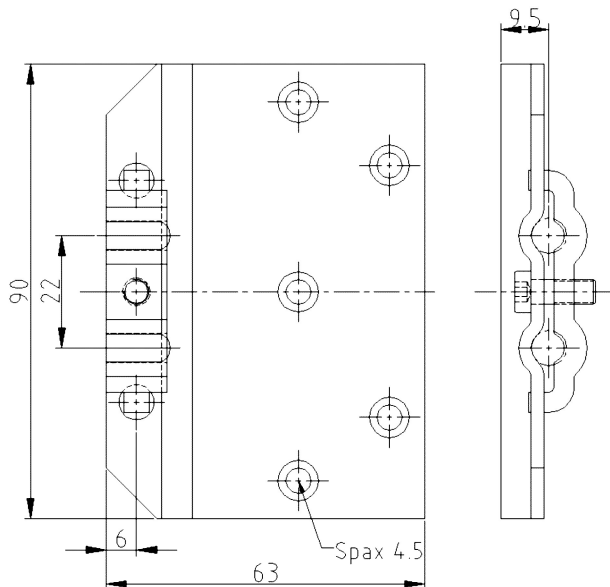


**Steel Receiver ST10-63**



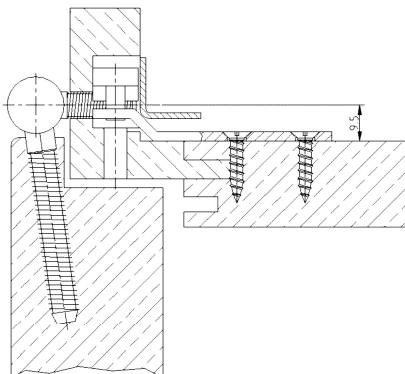
**Additional Information**

Standard load: Maximum door weight 60 kg (per pair)  
(if bushing according to catalogue page 07.40 f. is used)

Application: Wood frames, closed frames with small mounting depth, for example renovation frames

Combination: COMBICA® frame parts 1534, 1544, 2641, 2941

**Section Drawing**



Item	Finish	PU Bemerkung
020543	zinc plated	100 Stahltasche ST10/9,5/63