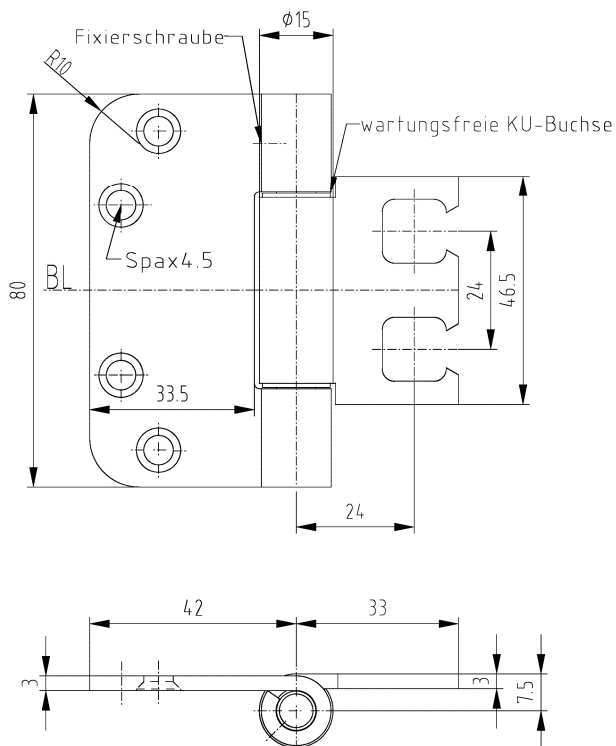


**COMBICA® 1587 MF complete -33,5 mm-**



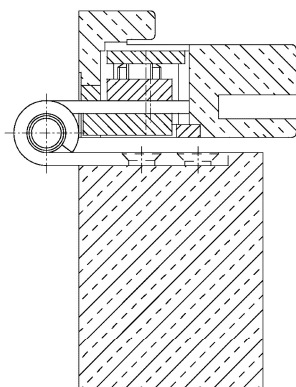
**Additional Information**

Standard load: Maximum door weight 70 kg (per pair)

Application: Complete hinge with fixing screw for non-rebated doors, has to be recessed into the door, high-quality appearance due to straight hinge arm

Combination: COMBICA® 3-D receiver STV 58/24 3-D

**Section Drawing**



Item	Finish	PU
037837	enox brushed	50