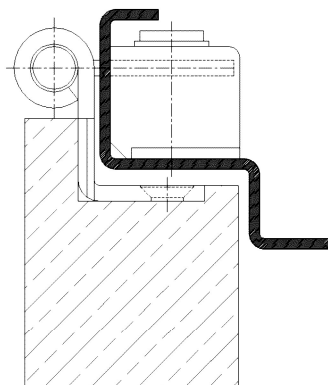


**Additional Information**

Standard load: Maximum door weight 80 kg (per pair)  
Application: Steel frames, maintenance-free, with fixing screw, rebated doors, to be recessed.

Combination: Complete Hinge  
Receiver: standard receiver for steel frames, COMBICA ® Metal Retainer 2680 (page 06.60)

**Section Drawing**



Certified according to



Item	Finish	PU
022959	vernickelt	50
022961	weiß besch.	50
022978	enox brushed	50
036549	vergoldet	50
037258	satın nickel platec	50
037259	chrome plated	50
037260	satın chrome plat	40