

Additional Information

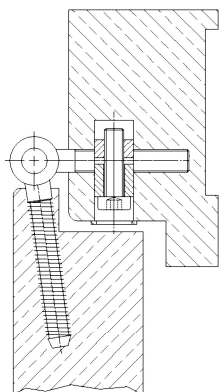
Standard load: Maximum door weight 70 kg

Application: Wood frames, maintenance-free, burglary-resistant.

Combination: Complete hinge

Receiver: All COMBICA® receivers from chapter 06 except ST40, ST42; PL or ST receivers depending on the load.

Section Drawing



Certified according to



Item	Finish	PU
022789	vernickelt	50
037229	white coated	50
037231	gold plated	50
037232	satın nickel platec	50
037233	chrome plated	50
037234	satın chrome plat	50
037235	enox brushed	50