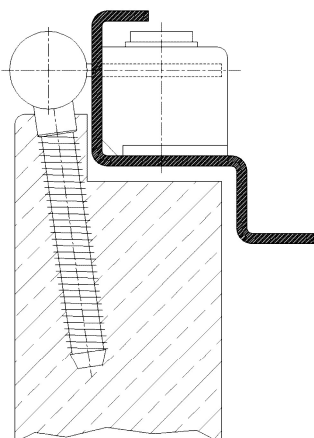


Additional Information

Standard load: Maximum door weight 70 kg (per pair)
 Application: Steel frames, maintenance-free, extended hinge arm
 Combination: COMBICA® door parts 2641, 2647, 2655, 2941
 Receiver: standard receiver for steel frames, COMBICA® Metal Retainer 2680 (page 06.60)

Section Drawing



Certified according to



Item	Finish	PU
022780	vernickelt	150
037301	weiß besch.	150
037303	gold plated	150
037304	satın nickel platec	150
037305	chrome plated	150
037306	satın chrome plat	150
037307	enox brushed	150