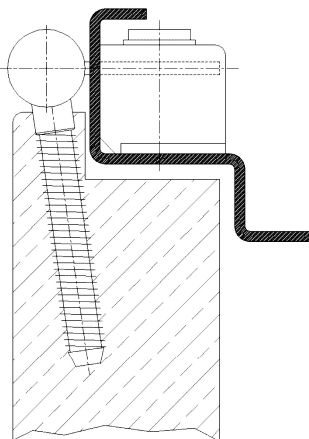


**Additional Information**

Standard load: Maximum door weight 70 kg (per pair)  
 Application: Steel frames, maintenance-free, extended hinge arm  
 Combination: COMBICA® door parts 2641, 2647, 2655, 2941  
 Receiver: standard receiver for steel frames, COMBICA® Metal Retainer 2680 (page 06.60)

**Section Drawing**



Certified according to



Item	Finish	PU
037294	white coated	100
037296	gold plated	100
037297	satin nickel plater	100
037298	chrome plated	100
037299	satin chrome plat	100
037300	enox brushed	100
044352	vernicket	100