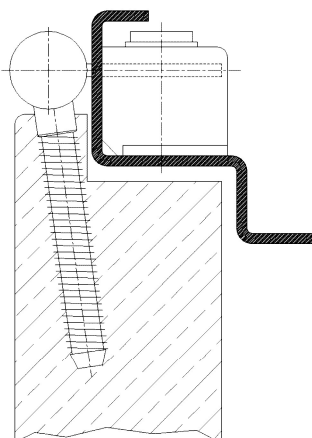


Additional Information

Standard load: Maximum door weight 70 kg (per pair)
 Application: Steel frames, maintenance-free
 Combination: COMBICA® door parts 2641, 2647, 2655, 2941
 Receiver: standard receiver for steel frames, COMBICA® Metal Retainer 2680 (page 06.60)

Section Drawing



Certified according to



Item	Finish	PU
037291	satin nickel plater	150
037292	chrome plated	150
037293	satin chrome plat	150
044154	ZN blau	150
044155	nickel plated	150
044346	gold plated	150
044347	white coated	150
044637	enox brushed	150