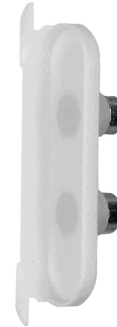
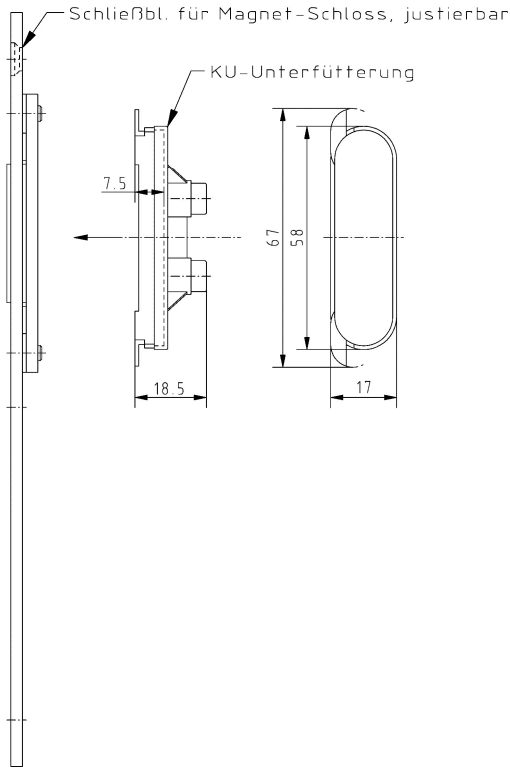


**Plastic Lining "magnetic"**

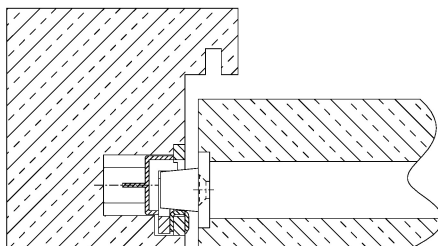


**Additional Information**

Application: Magnetic lock plastic lining for the adjustable latch hole of the magnetic striking plate

Combination: necessary accessory to protect the magnetic function

**Section Drawing**



Item	Finish	PU Remark
040146	grey	150 KU-Unterfütterung f. SBL Magnetschloss