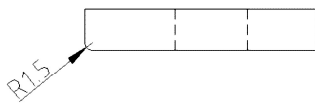
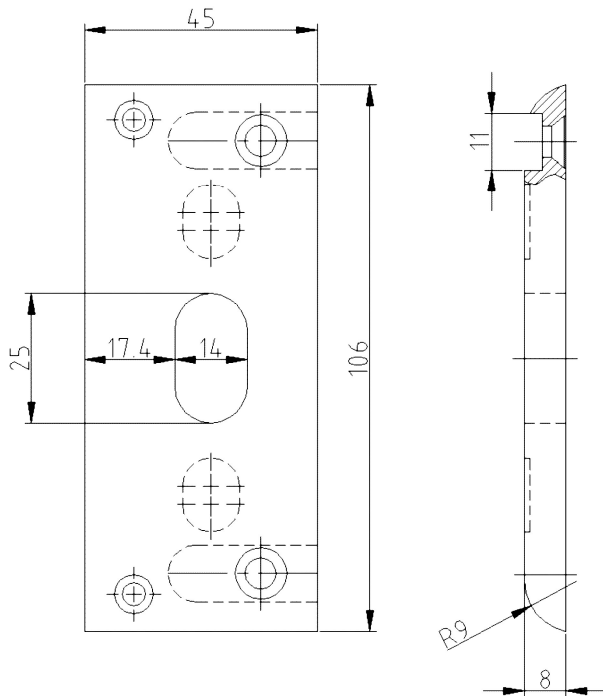
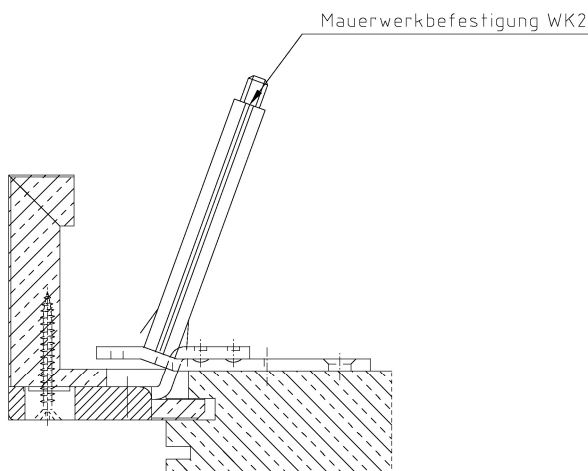


Safety Locking Plate, solid, non-rebated



Section Drawing



Additional Information

System: 1, GN, HS
 Application: Striking plate for flush doors, has to be recessed, suitable for additional bolt locking mechanism (3-point/5-point locking), made of solid steel, for heavy duty doors according to RC2 or RC3, prepared for screwing to safety plates with a minimum of milling effort
 Compatibility: Plastic lining with reference A, safety plates with reference A-N

Item	Finish	PU Remark
039278	Sterling silver	20 SBL 45 1-Loch schwer