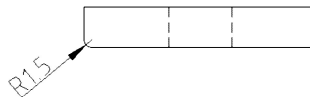
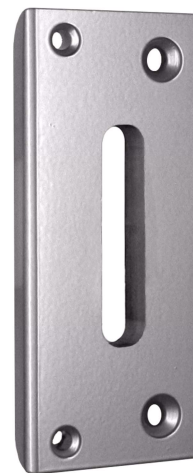
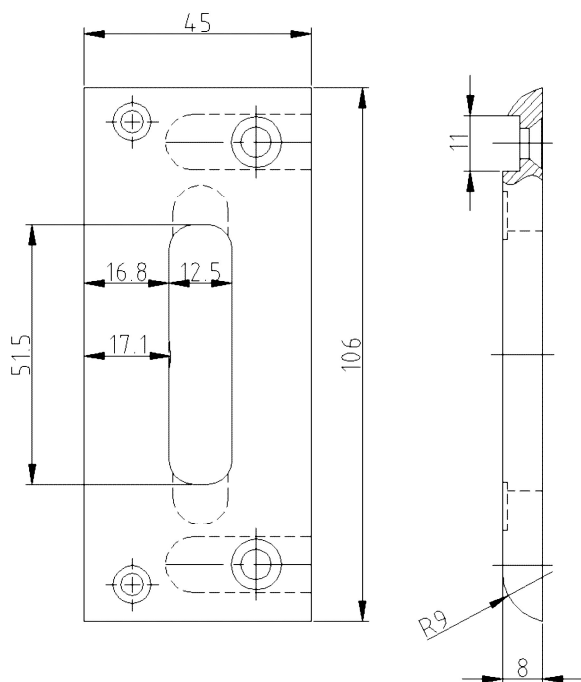
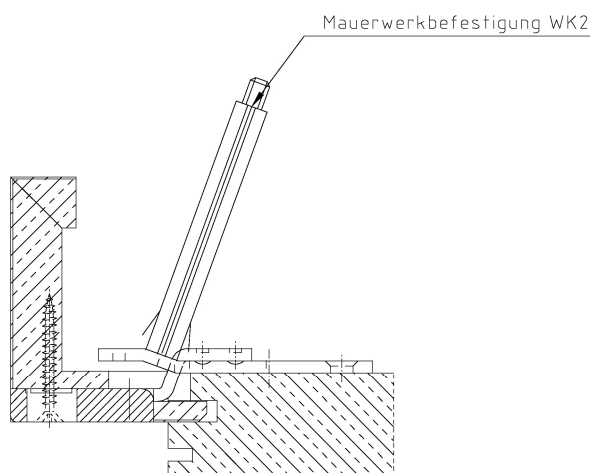


Safety Locking Plate, solid, non-rebated



Section Drawing



Additional Information

System: 1, GN, HS
 Application: Striking plate system for rebated doors, solid striking plate, has to be recessed, usable for additional latch (3 point/ 5 point interlock), at high loads e.g. RC2-/ RC3 doors; the contact, prepared for screwing to safety plates with a minimum of milling effort
 Compatibility: Plastic lining with reference A, safety plates with reference A-N

Item	Finish	PU Remark
039543	Sterling silver	20 SBL 45 1-Falle schwer