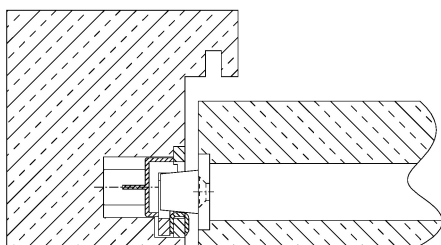


### Section Drawing



### Additional Information

System: 4  
 Application: Striking plate for non-rebated doors, has to be recessed; suitable for magnetic locks; latch hole is adjustable (3 mm), concealed adjustment mechanism, made of stainless steel components  
 Accessories: necessary plastic lining "magnetic" (page 03.Z94)  
 Compatibility: plastic lining with reference A for locking latch, safety plates with reference D

Item	Finish	PU Remark
040144	enox brushed	80 SBL 2-L. justierbar V3 li. magnetic
041211	PVD black	80 SBL 2-L. justierbar V3 li. magnetic
040145	enox brushed	80 SBL 2-L. justierbar V3 re. magnetic
041212	PVD black	80 SBL 2-L. justierbar V3 re. magnetic