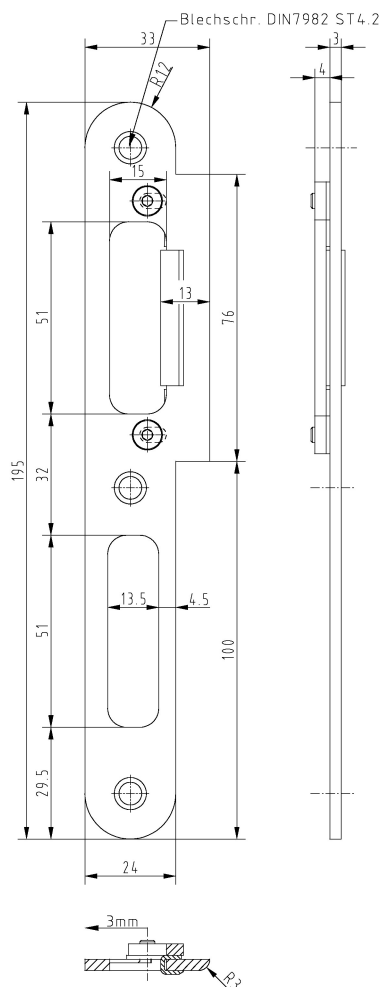


Main Locking Plate, light, non-rebated



Additional Information

- System:** 4
Application: Striking plate for non-rebated doors, has to be recessed; suitable for all DIN locks; latch opening is adjustable (3 mm), concealed adjustment mechanism; made of stainless steel components; the Ö-Norm variation and a inlet latch with 15 mm is also available
Accessories: plastic lining with reference B for locking latch, with reference C for pusher latch, safety plate with reference D

Item	Finish	PU Remark
039019	enox brushed	60 SBL 2-L. justierbar V3 li., 13 mm
039020	enox brushed	60 SBL 2-L. justierbar V3 re., 13 mm