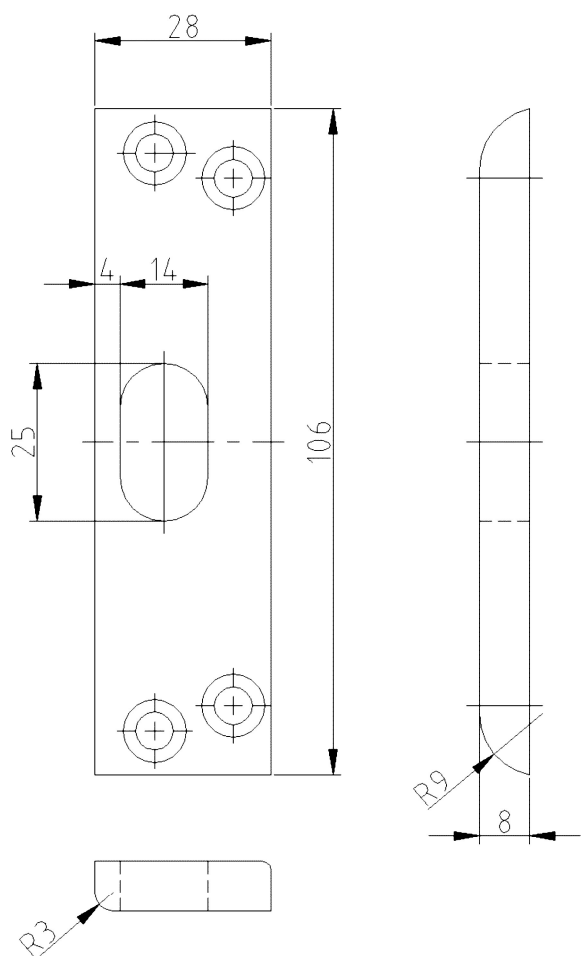


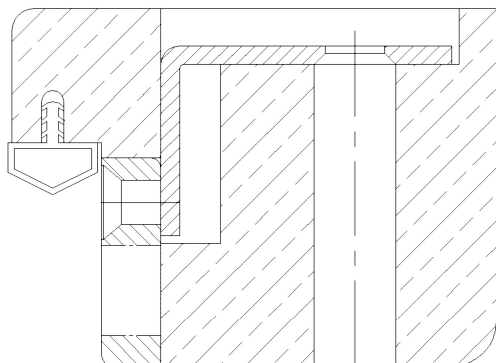
**Safety Locking Plate, solid, rebated**



**Additional Information**

System: 2  
 Application: Striking plate system for rebated doors, solid striking plate, has to be recessed, for pan bolt with additional locking, usable for KFV (3 point/5 point interlock), at high loads e.g. RC2-/ RC3 doors;  
 Compatibility: Plastic lining with reference B, safety plates with reference B

**Section Drawing**



Item	Finish	PU Remark
022699	white coated	40 SBL BLZ 28 1-Loch
037082	Niro gebürstet	100 SBL BLZ 28 1-Loch
037423	silver color	40 SBL BLZ 28 1-Loch