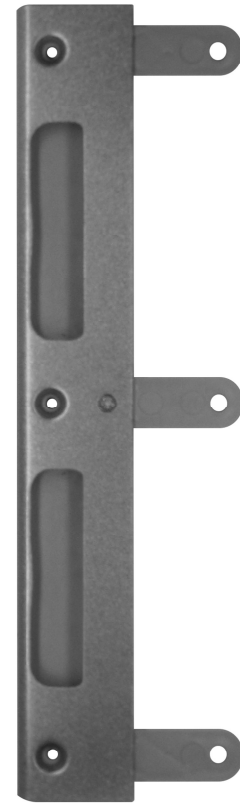
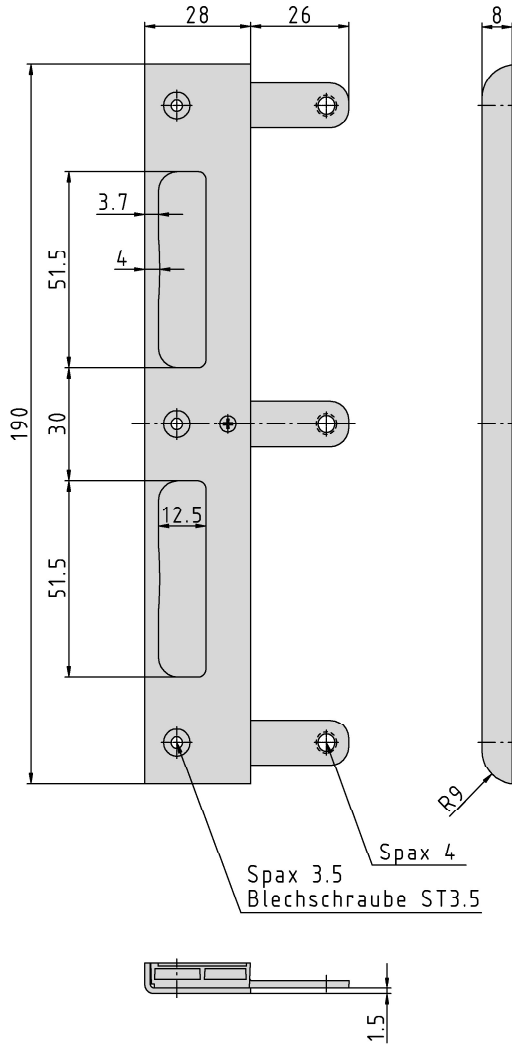


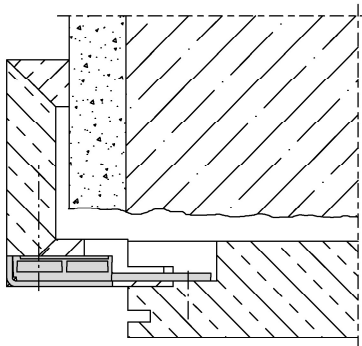
**Main Locking Plate, light, rebated**



**Additional Information**

System: HS  
 Application: Striking plate system for rebated doors, has to be recessed, suitable for all DIN locks;  
 Note: the external dimensions correspond to those of solid striking plates (System1) so that the striking plate fits into the same recess

**Section drawing**



item no.	Finish	PU
040084	enox brushed	70
040082	new silver	70
040083	gold plated	70
040208	white powder coated	70
040948	nickel plated	70