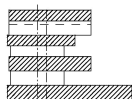
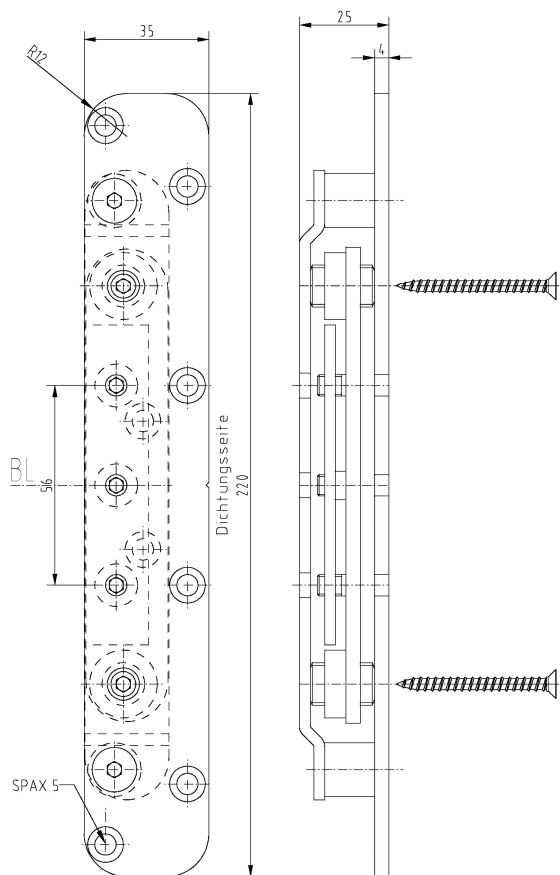


**OBJECTA® STV113/56 3-D, wide**



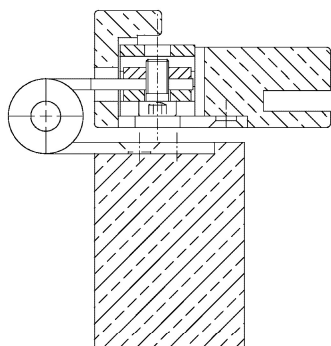
**Additional Information**

Standard load: Maximum door weight 200 kg (per pair)  
Application: Wood frames, 3-D receiver, **fully assembled**, integr. pull-out protection,

adjustment range 3 mm in all directions, solid front plate made of steel/enox; the receiver can be fixed with screws through the adjustment spindles

Combination: all OBJECTA® 3-D heavy duty hinges with 56 mm (VX) connection size

**Section Drawing**



Item	Finish	PU
039456	enox brushed	16