

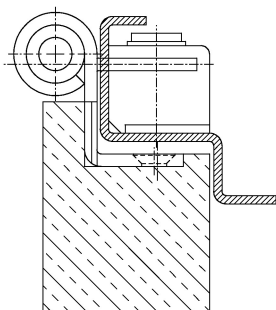
Additional Information

Standard load: Maximum door weight 100 kg (per pair)
Application: Rebated doors, steel frame, maintenance-free, with fixing, screw, detachable when mounted

Receiver: Standard receiver element in steel frames, COMBICA® Metal Retainer 2680 (page 06.60)

Remark: DIN left and DIN right different

Section Drawing



Item	Finish	PU Remark
039839	Niro gebürstet	20 OBJECTA® 2039/2080/160 links
039838	enox brushed	20 OBJECTA® 2039/2080/160 rechts