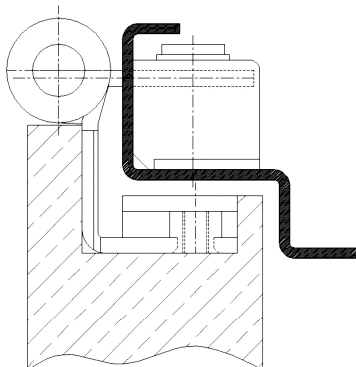


Additional Information

Standard load: Maximum door weight 150 kg
 Application: Renovation hinge for rebated doors with continuous seal; maintenance-free, with fixing screw, detachable when mounted, including spacer plate
 Receiver: Per hinge one standard receiver (top) and one clinch nut M10 (bottom)

Section Drawing



Item	Finish	PU
039251	enox brushed	10