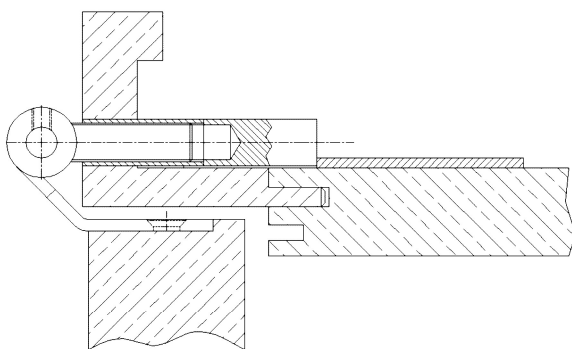


Additional Information

Standard load: Maximum door weight 120 kg (per pair)
 Application: Non-rebated doors in steel frames with clinch nut M10, maintenance-free, with fixing screws, detachable when mounted
 Receiver: Clinch nut M10

Section Drawing



Item	Finish	PU
037609	satin nickel plated	20
037668	enox brushed	20