

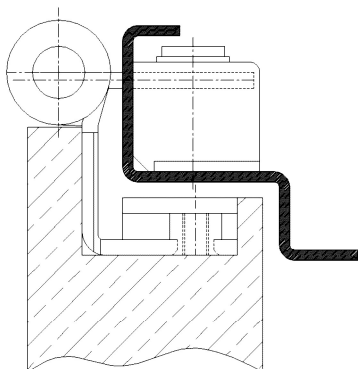
Additional Information

Standard load: Maximum door weight 100 kg (per pair)
Application: Rebated doors with continuous seal, steel frame, maintenance-free, with fixing screw, detachable when mounted, including spacer plate

Receiver: Standard receiver element in steel frames, COMBICA® Metal Retainer 2680 (page 06.60)

Remark: DIN left and DIN right different

Section Drawing



Certified according to



Item	Finish	PU Remark
036672	nickel plated	30 OBJECTA® 2049/2080/100 FD links
036746	weiß beschichtet	30 OBJECTA® 2049/2080/100 FD links
036749	enox brushed	30 OBJECTA® 2049/2080/100 FD links
037575	gold plated	30 OBJECTA® 2049/2080/100 FD links
037581	satın nickel plater	30 OBJECTA® 2049/2080/100 FD links
037861	satın chrome plat	30 OBJECTA® 2049/2080/100 FD links
036640	nickel plated	30 OBJECTA® 2049/2080/100 FD rechts
036745	weiß beschichtet	30 OBJECTA® 2049/2080/100 FD rechts
036748	enox brushed	30 OBJECTA® 2049/2080/100 FD rechts
037576	gold plated	30 OBJECTA® 2049/2080/100 FD rechts
037580	satın nickel plater	30 OBJECTA® 2049/2080/100 FD rechts