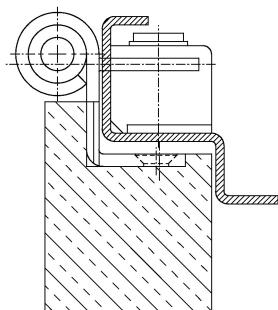


Additional Information

- Standard load: Maximum door weight 100 kg (per pair)
 Application: Rebated doors, steel frame, maintenance-free, with fixing screw, detachable when mounted
 Receiver: Standard receiver element in steel frames, COMBICA® Metal Retainer 2680 (page 06.60)
 Remark: DIN left and DIN right different

Section Drawing



Certified according to



Item	Finish	PU Remark
022849	nickel plated	40 OBJECTA® 2039/2080/100 links
022888	enox brushed	40 OBJECTA® 2039/2080/100 links
022889	weiß beschichtet	30 OBJECTA® 2039/2080/100 links
036523	gold plated	30 OBJECTA® 2039/2080/100 links
036829	chrome plated	30 OBJECTA® 2039/2080/100 links
039695	enox polished	40 OBJECTA® 2039/2080/100 links
022848	nickel plated	40 OBJECTA® 2039/2080/100 rechts
022958	weiß beschichtet	30 OBJECTA® 2039/2080/100 rechts
022973	enox brushed	40 OBJECTA® 2039/2080/100 rechts
036522	gold plated	30 OBJECTA® 2039/2080/100 rechts
036833	chrome plated	30 OBJECTA® 2039/2080/100 rechts
039696	enox polished	40 OBJECTA® 2039/2080/100 rechts