

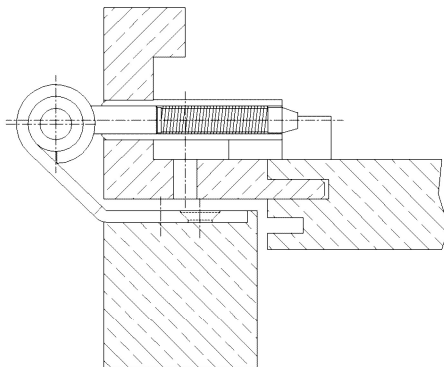
Additional Information

Standard load: Maximum door weight 80 kg (per pair)

Application: Non-rebated doors in wood frames, maintenance-free, with fixing screw, detachable when mounted

Receiver: All COMBICA® receiver types from chapter 6, except ST40, ST42

Section Drawing



Item	Finish	PU
022942	nickel plated	30
037767	enox brushed	25