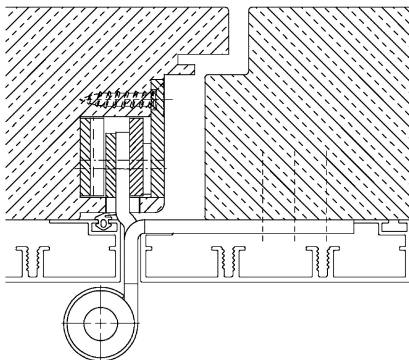


Additional Information

Standard load: Maximum door weight 160 kg (per pair)
Application: Wood-Aluminium-Profile elements, maintenance-free, with fixing screw, detachable when mounted, material thickness 4 mm.

Receiver: OBJECTA® 3-D receiver STV113/56 or STV135/56; connection size 56 mm (VX).

Section Drawing



Item	Finish	PU
039093	enox brushed	12