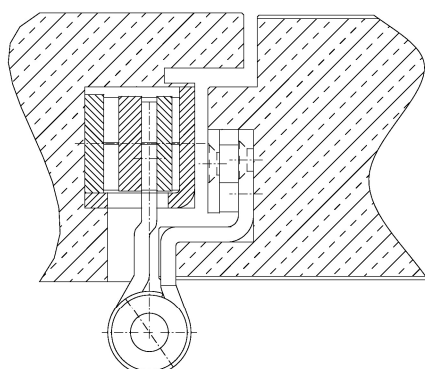


Additional Information

Standard load: Maximum door weight 200 kg
 Application: Flush-mount rebated doors with continuous seal, maintenance-free, with fixing screw, detachable when mounted, material thickness **4 mm**
 Receiver: 3-D receiver types according to chapter 5 with connection size 56 mm (VX)

Section Drawing



Certified according to



Item	Finish	PU
039060	satin chrome plat	10
040655	enox brushed	10