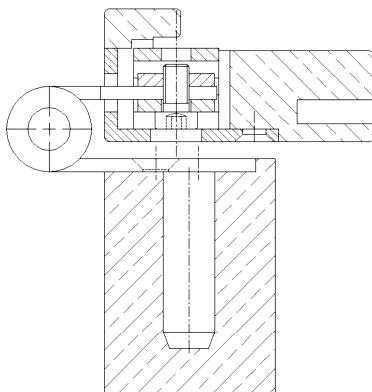


Additional Information

Standard load: Maximum door weight 160 kg (per pair)
Application: Non-rebated doors, maintenance-free, w/fixing screws, detachable when mounted, pivot pins provide additional stability.
Receiver: OBJECTA® 3-D receiver types according to chapter 2 with connection size 56 mm (VX).

Section Drawing



Certified according to



| Item | Finish | PU |
|--------|---------------------|----|
| 022491 | nickel plated | 20 |
| 022492 | enox brushed | 20 |
| 022665 | weiß beschichtet | 5 |
| 036955 | gold plated | 5 |
| 036956 | satin nickel platec | 5 |
| 036957 | chrome plated | 5 |
| 036958 | satin chrome plat | 5 |