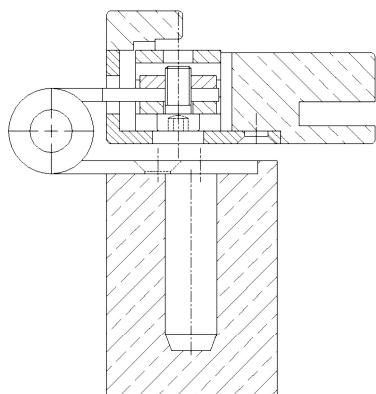


Additional Information

Standard load: Maximum door weight 120 kg (per pair)
Application: Non-rebated doors, maintenance-free, w/fixing screws, detachable when mounted, pivot pins provide additional stability
Receiver: OBJECTA® 3-D receiver types according to chapter 2 with connection size 56 mm (VX)

Section Drawing



Certified according to



| Item | Finish | PU |
|--------|---------------------|----|
| 022497 | nickel plated | 10 |
| 022498 | Niro gebürstet | 20 |
| 022932 | white coated | 10 |
| 036904 | gold plated | 30 |
| 036905 | satın nickel platec | 10 |
| 036906 | chrome plated | 10 |
| 036907 | satın chrome plat | 10 |