

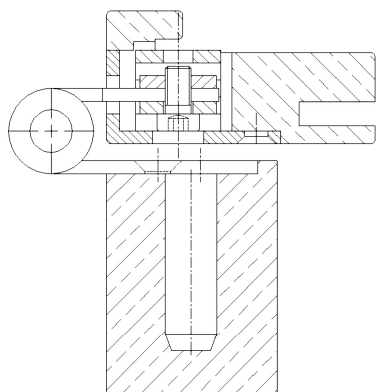
### Additional Information

Standard load: Maximum door weight 100 kg (per pair)

Application: Non-rebated doors, maintenance-free, fixing screw, detachable when mounted, pivot pin provides additional stability

Receiver: OBJECTA® 3-D receiver types according to chapter 2 with connection size 56 mm (VX)

### Section Drawing



Certified according to



Item	Finish	PU
022934	enox brushed	10
022935	nickel plated	10
022936	weiß beschichtet	10
036841	gold plated	10
036842	satın nickel platec	10
036843	chrome plated	10
036844	satın chrome plat	10